

General Information:

Stage Director: John Hoopes (Right of first refusal)
Set Designer: David P. Gordon
Lighting Designer: Barry Steele
Costume Designer: Jessica Mueller (Costumes available)
Built by: Tyler Scenic, LLC in 2024
 Non-Traditional, Unit set w/moves, 2 Acts with 1 Intermission
History of Previous Usage: Nashville Opera (2024)

Primary Contact:

Randy Williams
 Director of Production
 (615) 832-5242
rentals@nashvilleopera.org

Rental Information:

Number of Vans: 1 for Scenery
Size of Vans: 53'
Costs: Available upon request.

Must have load-bars, straps and pads
Insurance Required: \$250,000

Original Theatre Information:

Nashville production presented at Jackson Hall, Tennessee Performing Arts Center (TPAC)

Jackson Hall Prosc. height: 36' - 0"
Jackson Hall Prosc. width: 45' - 0" to 57' - 4" (variable)
Jackson Hall Stage depth: 53' - 1" to back wall
Jackson Hall Apron depth: 5' - 0" from edge of stage to proscenium line
Jackson Hall SL Wing Space: 45' - 8"
Jackson Hall SR Wing Space: 27' - 10"

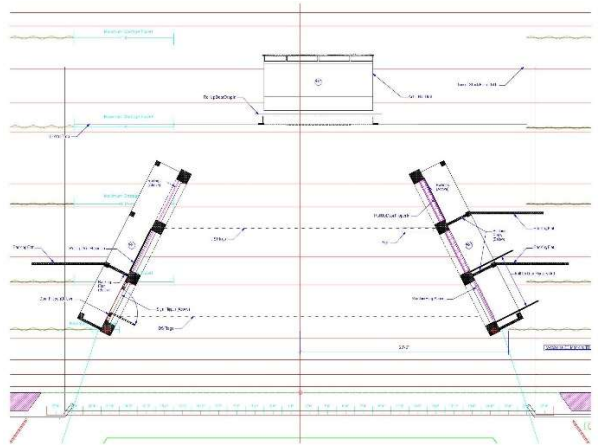
Set Technical Information:

Minimum Width: 50' - 0"
Minimum Depth: 52' - 0" (Could be altered for a more shallow stage)
Line Sets for scenery: 6
Line Sets for electrics: 6 or 7 (estimate)
Line Sets for masking: 8 (estimate)
Height of tallest Unit: 28'
Height of Tallest Flying Piece: 28'
Furthest Upstage Flying Piece: 45' - 6"
Dimensions of Largest Flying Piece: 44' wide x 28' tall
Props & Scenic Elements Included: Complete Props available / NO weapons available
Items not Included: Legs and Borders, Ground Cloth (negotiable), RP or Cyc, Moon Box, Black Scrim, 2 chain motors
Notes: Costume Rental Available, Title Rental Available, 2 chain motors helpful in building the pivoting units

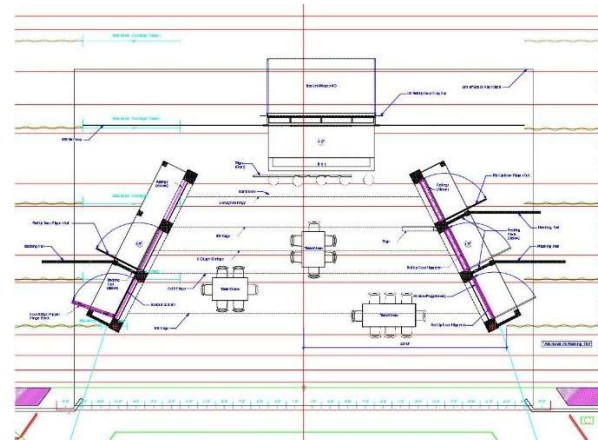
Crew Requirements: In Nashville, the following crew sizes were used. Crew sizes may vary for the renting company based on theatre and schedule. Nashville Opera used a non-union crew. Scenery was not constructed for repertory presentation.

	Load-In	Running	Strike
Carpenters	12	7	12
Fly Rail	2	2	2
Props	2	3	2
Electricians	6	3 (2 FS - 1 deck)	6
Truck Loaders	N/A	N/A	N/A
Approximate Time	+/- 12 hours	3 hours	7 hours

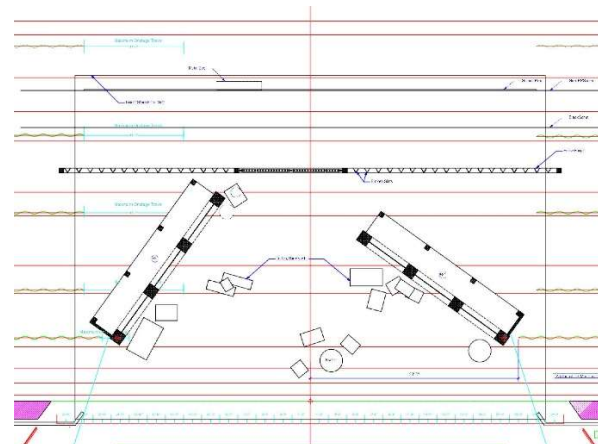
Act 1



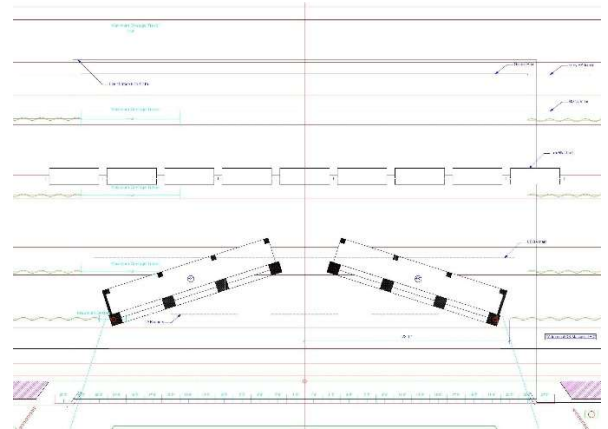
Act 2



Act 3



Act 4



[Click to view Carmen production photos.](#)