

General Information:

Stage Director: John Hoomes
Set Designer: John Hoomes, Barry Steele, Randy Williams
Lighting Designer: Barry Steele
Costume Designer: A.T Jones & Sons, Inc
Built by: MadeFirst in 2012

Traditional, Minimal, Units w/props

History of Previous Usage: Nashville Opera (2012), Mobile Opera (2013), Indianapolis Opera (2014), Kentucky Opera (20114), Opera Colorado (2016)

Primary Contact:

Randy Williams
 Director of Production
 (615) 832-5242
rentals@nashvilleopera.org

Rental Information:

Number of Vans: 1 for Scenery
Size of Vans: 26' Air-Ride Box Truck
Costs: Available upon request.

Must have load-bars, straps and pads
Insurance Required: \$50,000

Original Theatre Information:

Nashville production presented at Jackson Hall, Tennessee Performing Arts Center (TPAC)

Jackson Hall Prosc. height: 36' - 0"
Jackson Hall Prosc. width: 45' - 0" to 57' - 4" (variable)
Jackson Hall Stage depth: 53' - 1" to back wall
Jackson Hall Apron depth: 5' - 0" from edge of stage to proscenium line
Jackson Hall SL Wing Space: 45' - 8"
Jackson Hall SR Wing Space: 27' - 10"

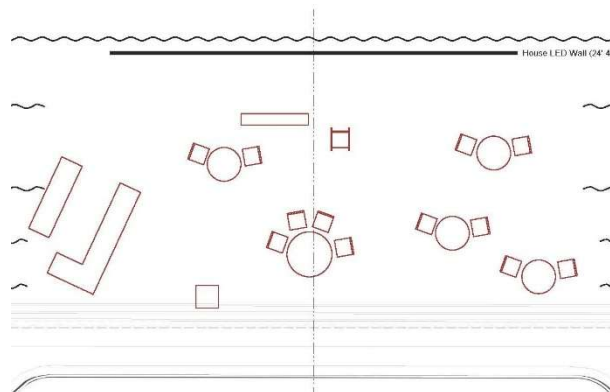
Set Technical Information:

Minimum Width: 52' - 0" (Allows as much room as possible for rear projection)
Minimum Depth: 20' - 0" (Could be altered for a more narrow stage, will alter imagery)
Line Sets for scenery: 8
Line Sets for electrics: 6 or 7 (estimate)
Line Sets for masking: 12 (estimate)
Height of tallest Unit: 28' - Portal
Height of Tallest Flying Piece: 28'
Furthest Upstage Flying Piece: 45' - 6"
Dimensions of Largest Flying Piece: 44' wide x 28' tall
Props & Scenic Elements Included: Complete Props available
Projections: 2 Barco FLM R22 were rented and used, 1 FOH and 1 RP (approx. 15' off deck)
Items not Included: Legs and Borders, RP, Projectors, Scaffolding for raising rear projector to desired height
Notes: Title Rental Available, Show can be produced with one projector only (RP), Production requires the use of projectors to complete the scenic elements

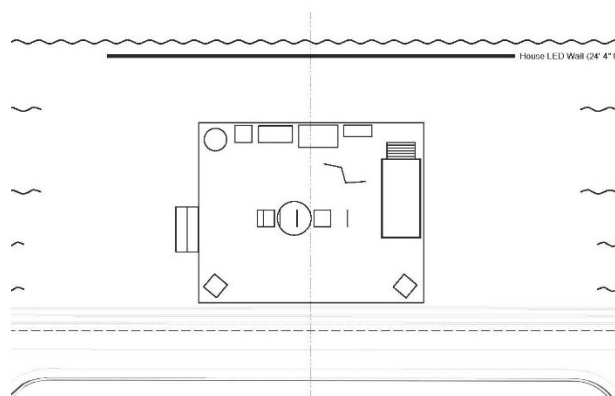
Crew Requirements: In Nashville, the following crew sizes were used. Crew sizes may vary for the renting company based on theatre and schedule. Nashville Opera used a non-union crew. Scenery was not constructed for repertory presentation.

	Load-In	Running	Strike
Carpenters	6	4	6
Fly Rail	2	1	2
Props	3	4	3
Electricians	6	3 (2 FS)	6
Truck Loaders	N/A	N/A	N/A
Approximate Time	4-6 hours	3 hours	4-6 hours

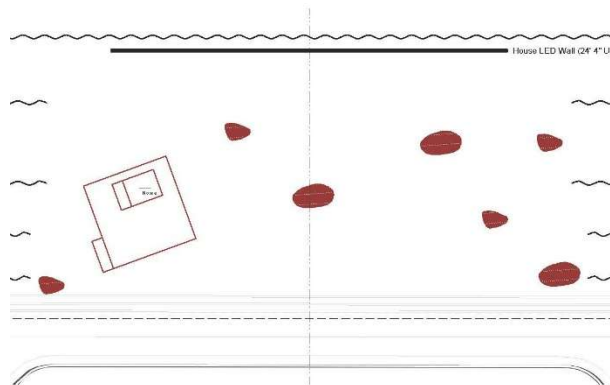
Act 1



Act 2



Act 3



[Click to view La Fanciulla Del West production photos.](#)